



Nauru Tower

# NAURU TOWER

First Class Elegance

Residential Manager, Duane A. Komine ARM® 592-1200 592-1208 (fax)  
 Administrative Assistant, Crystal Hung 592-1200  
 Receptionist, Briana Pocock 592-1200  
 Office Hours: Monday - Friday, 8:00 a.m. - 5:00 p.m.  
 Property Manager, Richard McDougal Ph.D., CMCA 593-6884 593-6333 (fax)  
 Accountant, Eugene Pinera 593-6841 593-6333 (fax)  
 (maintenance fee questions, change of address, etc.)  
 Nauru Tower Security (NTS) (24 Hours) 592-1203

E-Mail Address: [nauru@aloha.net](mailto:nauru@aloha.net)

Location Address: 1330 Ala Moana Blvd. Honolulu, HI 96814

\*Notary Public Service by appointment only\*

Web Site: [www.naurutower.com](http://www.naurutower.com)



## HAPPY NEW YEAR 2005!

The staff of Nauru Tower would like to extend their warmest appreciation to residents who made the Annual Employee's Christmas Fund possible. Your contributions of generous gifts and donations were overwhelming this holiday season. We welcome the new year and promise to uphold the highest standards for Nauru Tower residents through providing quality service and security.

We would like to acknowledge the following contributors. We sincerely apologize if we inadvertently missed any names or companies. Best wishes for good health, happiness and prosperity in the new year!



Happy New Year!  
From the Komines

Alvarez, E.  
 Aoyama, M.  
 Azuma, T.  
 Bauman, C. & Hodges, M.\*  
 Berger, J. M/M\*  
 Black, G. & Turnbull, R.  
 Bosley, R. M/M  
 Breinich, J.  
 Bring, H. M/M  
 Brown, R. M/M  
 Burke, M/M  
 Chang, L. M/M  
 Chen-Denison, A. & Eheler, M.\*  
 Cheng, M/M  
 Cheng, S.  
 Chew, L. M/M  
 Chin, K.  
 Chong, C. & Lee, T.  
 Chow, R. M/M  
 Choy, P. M/M  
 Chu, V M/M  
 Chu, W. M/M  
 Chung, F. & Pang, M.  
 DeJong, J. M/M  
 Dong, J. & Fong, G.  
 Eddy, P. & Sakurai, S.  
 Erickson, N. M/M  
 Factora, P.  
 Fitzgibbons, P. & Price, M.  
 Floro, F.\*  
 Frohlich, G. M/M  
 Fujikake, D. & Fujikake, A.  
 Funayama, W. M/M  
 Gaeta, R. M/M  
 Gibb, C. M/M  
 Gibson, R. M/M\*  
 Godfrey, D.  
 Goetz, G. M/M  
 Goff, F.  
 Guirguis, W. M/M\*  
 Ha, J.  
 Hamm, B., Hamm, F. & Ido, Y.  
 Hashimoto, T.

Hayakawa, K. M/M  
 Hayashi, G. M/M  
 Hazama, P. Dr./M  
 Heitzman, C. M/M  
 Hersak, J. M/M  
 Hiltbrand, E. M/M  
 Honda, I.  
 Horita, K. M/M\*  
 Inouye, H. M/M  
 Inuma, J.  
 Ishikawa, S. M/M  
 Jacobs, L. M/M  
 Kaapuni, R. M/M  
 Kamei, M/M  
 Kang, S.  
 Katter, E. & Moniz, C.  
 Kennedy, T.  
 Kim, B. M/M  
 Kim, S. M/M  
 Kirby, L. M/M\*  
 Ko, M. & Wong, M.  
 Kodani, P.  
 Komine, A. & Komine S.  
 Lai, B. M/M  
 Lane, M. & Marino, L.  
 Lau, F. M/M  
 Lau, W.  
 Lee, C. M/M  
 Lee, E. & Jang, Y.  
 Lee, J.  
 Lee, J. & Park, E.  
 Low, D.  
 Mahler, B. M/M  
 Masuda, W. M/M  
 Matsumoto, M.  
 Matsumoto, S. M/M  
 McCarthy, P. M/M  
 Metter, S. M/M  
 Metz, M.  
 Mills, J. M/M  
 Minami, S.  
 Mizoguchi, M.  
 Moreno, C. Dr/M

Mower, M/M  
 Namgung, J. M/M  
 Naus, J. M/M  
 Ngo, T.  
 Nishida, S. M/M  
 Okuda, S. M/M  
 Oneda, K. M/M\*  
 Palko, A.  
 Pearman, B. & Wee, P.  
 Pedersen, P. M/M  
 Ras, A. M/M  
 Schochet, M. M/M  
 Scolinos Family  
 Seaman, R. M/M\*  
 Sekino Family  
 Shin, M/M  
 Shoji, M.\*  
 Shoji, M.  
 Singer, F. Dr. & Skandis, G.  
 Slaustas, N.  
 Smith, P.  
 Speers, R. Dr./M  
 Steiger, K. M/M  
 Straube, W. M/M  
 Sudmalis, A.  
 Sun, L.  
 Takebayashi, T. M/M  
 Takeyama, M. M/M  
 Tanaka, H. M/M  
 Thabet, R. M/M  
 Tong, S. M/M  
 Totoki, M.  
 Totoki, N.  
 Truong, T. M/M  
 Tsia, A. M/M  
 Tsung Family  
 Turkalp, I. M/M  
 Uchida, M. M/M  
 Utzig, M/M  
 Vourliotis, J.  
 Wada, J.  
 Warren, F. M/M  
 Weers, A.

Yamaguchi-Aranoff, M.  
 Yokoyama, K. M/M  
 Yokoyama, S. M/M\*

### COMPANIES:

5 C Carpet Cleaning  
 Alii Fire Protection  
 American Carpet One  
 Ben Woo Architects  
 Brett Hill Incorporated  
 Bum Co., Ltd.  
 Doonwood Engineering  
 Fogerty Realty  
 Global Odor Control  
 Hawaiian Relocation  
 Hawaiiana Management Co.  
 Hoan Electronics Co., Ltd.  
 Honolulu Realty  
 Jade Painting  
 JD Painting  
 Johnson Controls  
 King's Appliance  
 Lightbulb Source  
 Limit, LLC  
 Marble Life  
 Mo Betta Auto Detailing  
 Mountain Apple Company  
 Northstar  
 Pacific Trend Association  
 Pur Air  
 Raynor Pacific  
 Thyssen Krupp  
 Tosei Hawaii  
 Toyo Sales and Management  
 Trane Pacific  
 WDI International  
 Your Retirement Company\*\*

\* Gold Sponsor (\$500 or more)

\*\* Platinum Sponsor

### Inside this Issue:

- Happy New Year 2005!
- A/C Unit Cleaning
- Gaggenau Vent / Cooking Odors
- Annual Owner's Meeting





## A/C FILTER CHANGE 2005

Air conditioning filter changes for all occupied units will commence January 11, 2005. Maintenance includes: filter replacements, algae tab installation (a deterrent of algae growth), cleaning of A/C units and drain pans including drain lines. Nauru Tower maintenance will also be testing Simplex smoke detectors and emergency call buttons located in bedrooms. As a courtesy, maintenance will be adjusting front door closures to prevent doors from slamming, which is known to disturb neighboring units.

**REMINDER:**  
*As a courtesy and safety to minimize accidents, please remember to turn on head lights while driving through Nauru Tower's parking structure. Please drive carefully!*



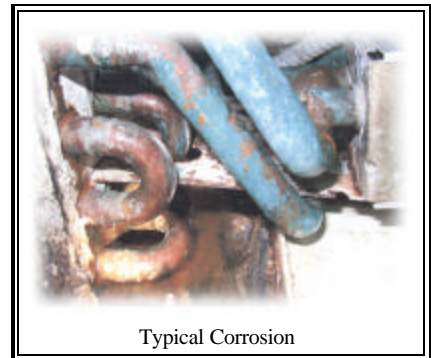
*Please stop by the Manager's Office to update your file. Let us know if you've changed your name (married) or if you have a new car, phone number, new people residing in your unit. In need of emergency assistance? Our files help us in assisting your needs.*



*Your comments and contributions are welcomed. Please e-mail your suggestions to [nauru@aloha.net](mailto:nauru@aloha.net) or fax us at 808-592-1208*

Door hangers indicating the filter change date for your unit will be distributed a week prior to maintenance. Please return door hangers as soon as possible to the manager's office, complete with your signature and a selection indicating what actions you would like for us to take. If you are an absentee owner, you must make arrangements with your agent/realtor to contact the management office for service. Service is not mandatory and may be declined.

Pur Air Hawaii and Trane Pacific Service are offering Nauru Tower residents free inspections of A/C units that show signs of mold, fungi, and other contaminants that may cause respiratory and eye irritation. We would like to stress the importance of properly maintaining A/C units. Simple filter changes and algae tablet installations are not enough to prevent the corrosion of insulation of cooling coils and microbial contaminants from growing in the A/C unit. Although Nauru Tower personnel do perform semi-annual filter changes, further investigations is the responsibility of an owner.



Typical Corrosion

If you are interested in having a free inspection and estimate done by a licensed technician, please call Pat at Pur Air Hawaii: 485-0410. Owners and tenants can also contact Pam at Trane Pacific Service: 845-9791.

## 14th ANNUAL OWNER'S MEETING

We are pleased to announce that our 14th Annual Owner's Meeting will be held on Tuesday, March 15, 2005. As always, owners are invited to join Nauru Tower Management and the Board of Directors in the main lobby to discuss pressing issues and be updated on the most current status of the building. We look forward to seeing everyone there.

## VARIO VENTILATOR

The Vario Ventilator is located next to your Gaggenau stove top range and is used to clear smoke created while cooking on the stove top. The manufacturer suggests that the grease/ventilation grill be cleaned monthly. Filters are designed to be reused! Do not throw it away. Simply remove the ventilator's filter, by lifting upwards with the handles that are located at each end. Place the filter upside down and run it in a dishwashing cycle.

Nauru Tower management recommended the use of the Vario Ventilator while cooking so that food odors will not penetrate into the common areas of your floor. Remember, please do not prop your front door open as required by Hawaii fire codes. Thank you for your cooperation. If there are further questions, please contact the Manager's Office.

